



NIK BASPAR

GROUP

Polymeric Construction Pipe and Fittings

Push Fit Sewage Pipe & Fittings



Push Fit Municipal Sewage Pipe & Fittings



Polypropylene Pipe & Fittings



Aluminum Composite Pipe & Fittings



w w w . n i k b a s p a r . c o m

NIK BASPAR GROUP

SemiSilent 

- ▶ Mono Layer Pipe
- ▶ 2 - Layers Pipe
- ▶ 3 - Layers Pipe
- ▶ Fittings



Push Fit Sewage Pipe and Fittings



Gray (Fire Resistant)
Orange (Impact Resistant)

Use For:

- 1- Residential and Industrial
- 2- Exhaust Air - Vent
- 3- Drainage System



Unequal Branch 87°	
Code	Size
12302	75x50
12304	110x50
12312	110x75



Double Branch	
Code	Size
12339	110x110



Double Sockets	
Code	Size
12201	50
12202	75
12203	110
12204	125
12205	160



Reducer	
Code	Size
12206	75x50
12208	110x50
12210	110x75
12214	125x110
12216	160x110
12218	160x125



Siphon	
Code	Size
12101	50
12102	75
12103	110



Long / Short Trap	
Code	Size
12104	75-50
12105	long 75-75
12106	125-110
12114	75-50
12115	Short 75-75
12116	125-110



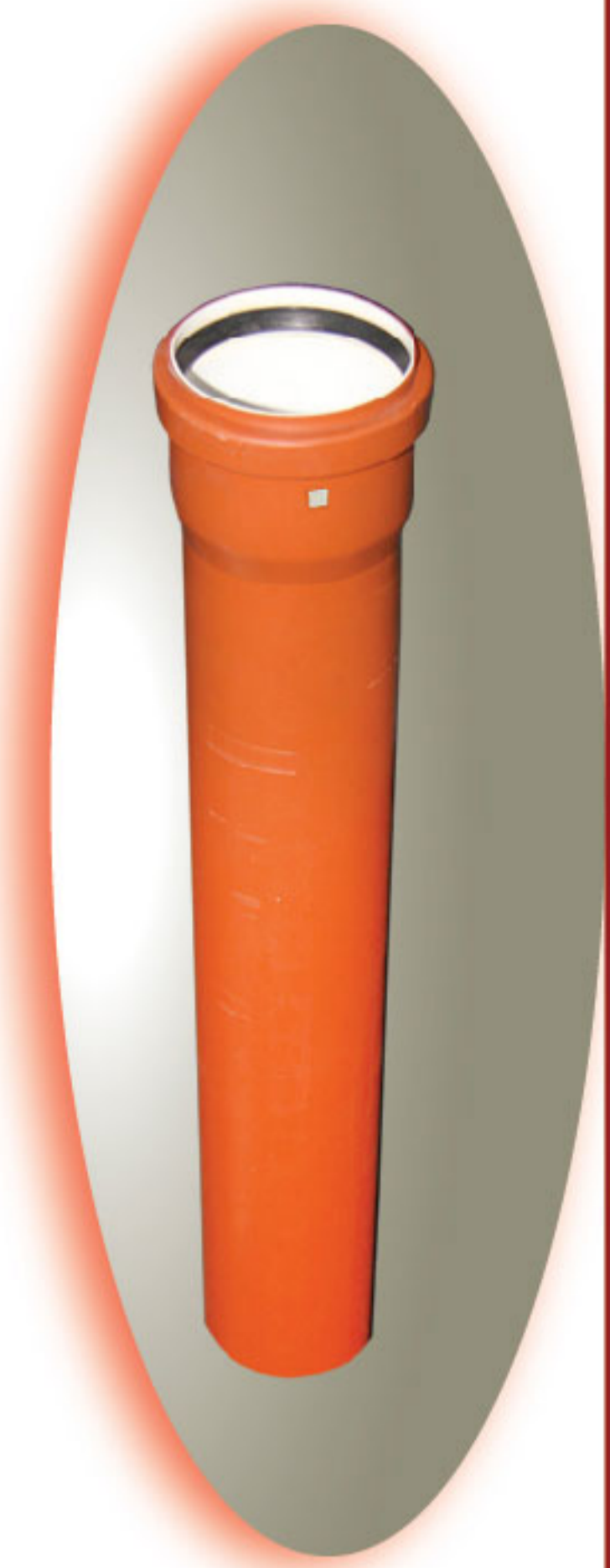
Access Fittings	
Code	Size
12603	75
12604	110
12605	125



Plug	
Code	Size
12701	50
12702	75
12703	110
12704	125
12705	160



Cane Roof (PE)	
Code	Size
12801	50
12802	75
12803	110
12804	125



Single / Double Socket Pipe			
Code	Size (mm)	Code	Size (mm)
11201	50-250	11204	125-250
11301	50-500	11304	125-500
11401	50-1000	11404	125-1000
11501	50-2000	11504	125-2000
11601	50-3000	11604	125-3000
11701	50-6000	11704	125-6000
11202	75-250	11205	160-250
11302	75-500	11305	160-500
11402	75-1000	11405	160-1000
11502	75-2000	11505	160-2000
11602	75-3000	11605	160-3000
11702	75-6000	11705	160-6000
11203	110-250		
11303	110-500		
11403	110-1000		
11503	110-2000		
11603	110-3000		
11703	110-6000		



Elbow 45°	
Code	Size
12401	50
12402	75
12403	110
12404	125
12405	160



Elbow 87°	
Code	Size
12901	50
12902	75
12903	110
12904	125



Long Elbow 87°	
Code	Size
12914	110
12915	125
12916	160



Equal Branch 45°	
Code	Size
12320	50
12322	75
12325	110
12329	125
12330	160



Equal Branch 87°	
Code	Size
12301	50
12303	75
12306	110
12310	125



Unequal Branch 45°	
Code	Size
12322	75x50
12323	110x50
12324	110x75
12328	125x110
12329	160x110

NIK BASPAR GROUP



- ▶ Mono Layer Pipe
UV Resistant
- ▶ 2 - Layers Composite Pipe
Antibacterial
- ▶ Welded Joints



Polypropylene Pipe and Fittings

Use For:

- 1- Hot , Cold and drinking water
- 2- Radiator Heating
- 3- Heating and Cooling with Air Conditioning



Up to 70°C



Male Wall Connection Elbow	
Code	Size (mm)
12009120	20x1/2
12009121	20x3/4



Female Adaptor	
Code	Size
12011111	20x1/2
12011112	25x1/2
12011113	25x3/4
12011114	32x1



Female Hex Adaptor	
Code	Size
12012114	40x1 1/4
12012115	50x1 1/2
12012116	63x2
12012117	75x2



Female Union	
Code	Size
1251012	20x1/2
1251534	25x3/4
1251710	32x1
1251014	40x1 1/4



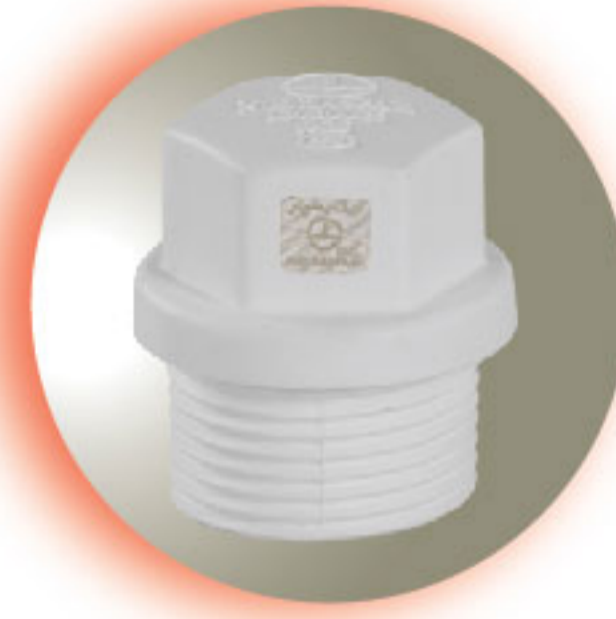
Male Adaptor	
Code	Size
12013111	20x1/2
12013112	20x3/4
12013113	25x1/2
12013114	25x3/4
12013115	32x1
12013116	40x1 1/4



Female T Part	
Code	Size
12014111	20x1/2x20
12014112	25x1/2x25
12014113	25x3/4x25



Valve	
Code	Size
12015020	20
12015025	25
12015032	32



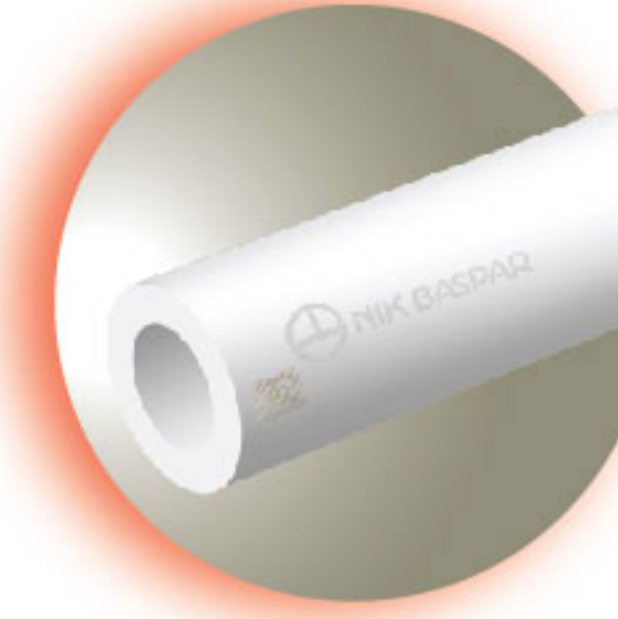
Threaded Cap	
Code	Size
12020020	20
12020025	25
12020032	32
12020040	40
12020050	50



Cap	
Code	Size
12021020	20
12021025	25
12021032	32
12021040	40
12021050	50
12021063	63



Test Plug	
Code	Size
12018020	20
12018025	25



Pipe PN 20			
Code	Size (mm)	Code	Size (mm)
11000020	20	11000050	50
11000025	25	11000063	63
11000032	32	11000075	75
11000040	40		



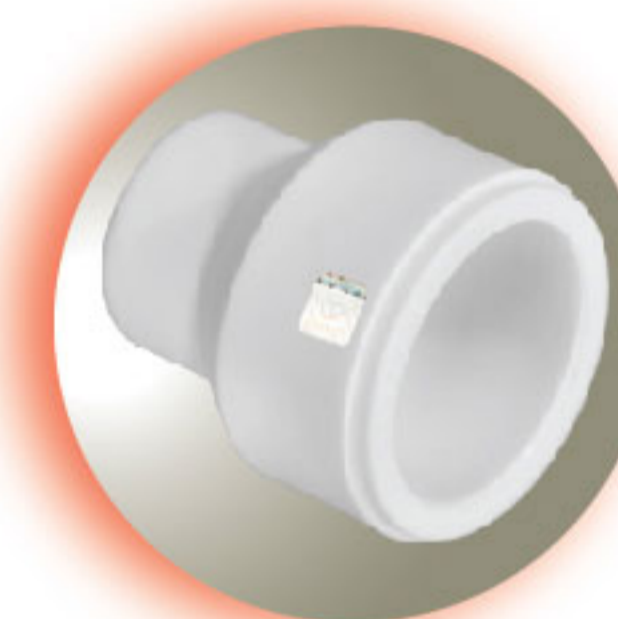
Socket			
Code	Size	Code	Size
12001020	20	12001050	50
12001025	25	12001063	63
12001032	32	12001075	75
12001040	40		



Elbow 90°			
Code	Size	Code	Size
12002020	20	12002040	40
12002025	25	12002050	50
12002032	32	12002063	63
12002035	25x20	12002075	75



Elbow 45°			
Code	Size	Code	Size
12003020	20	12003040	40
12003025	25	12003050	50
12003032	32	12003063	63



Reducer			
Code	Size	Code	Size
12004111	25x20	12004119	50x32
12004112	32x20	12004120	50x40
12004113	32x25	12004121	63x32
12004114	40x20	12004122	63x40
12004115	40x25	12004123	63x50
12004116	40x32	12004124	75x50
12004117	50x20	12004125	75x63
12004118	50x25		



Equal Tee			
Code	Size	Code	Size
12005020	20	12005050	50
12005025	25	12005063	63
12005032	32	12005075	75
12005040	40		



Unequal Tee			
Code	Size	Code	Size
12006111	20x20x25	12006118	40x20x40
12006112	25x20x25	12006119	40x25x40
12006113	25x20x32	12006120	40x32x40
12006115	25x25x32	12006121	50x32x50
12006116	32x20x32	12006122	50x40x50
12006117	32x25x32	12006123	63x50x63



Female Elbow			
Code	Size	Code	Size
12007111	20x1/2	12007114	25x3/4
12007112	20x3/4	12007115	32x1
12007113	25x1/2		

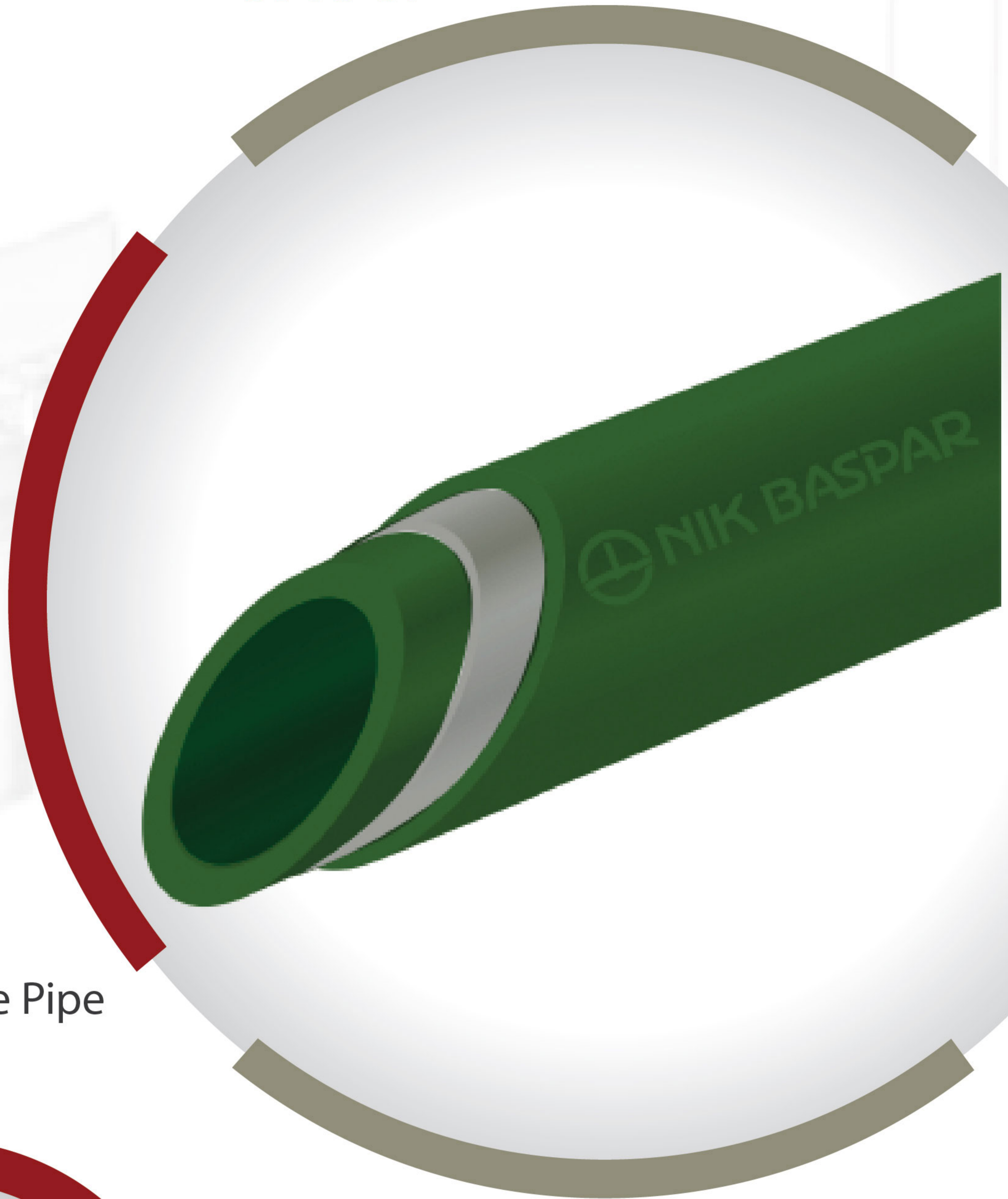


Female Wall Connection Elbow	
Code	Size
12008020	20x1/2
12008021	20x3/4



Male Elbow	
Code	Size
12009111	20x1/2
12009112	20x3/4
12009113	25x3/4
12009114	32x1

NIK BASPAR GROUP



- ▶ Mono Layer Pipe
UV Resistant
- ▶ 2 - Layers Composite Pipe
Antibacterial
- ▶ Welded Joints



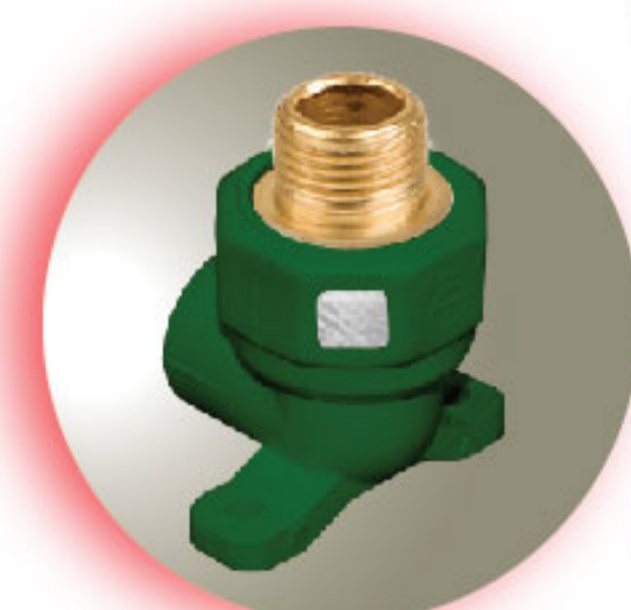
Polypropylene Pipe and Fittings

Use For:

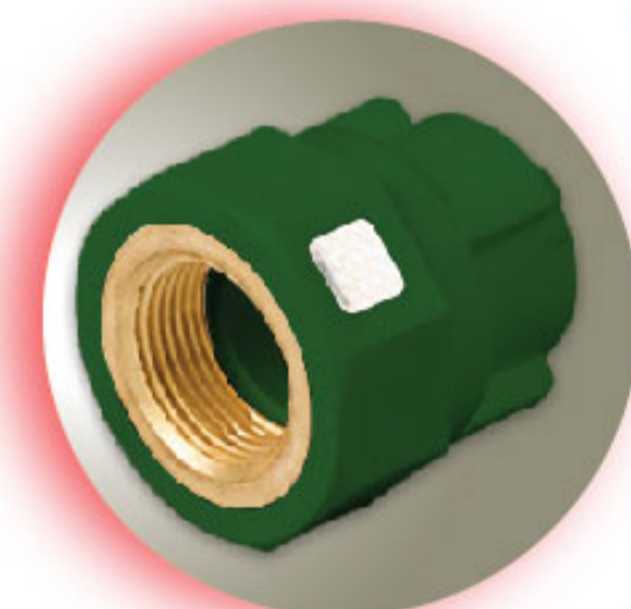
- 1- Hot , Cold and drinking water
- 2- Radiator Heating
- 3- Heating and Cooling with Air Conditioning



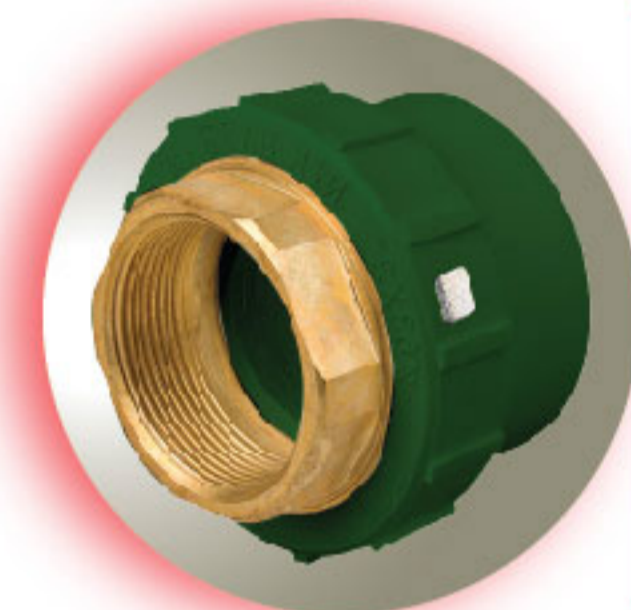
Up to 70°C



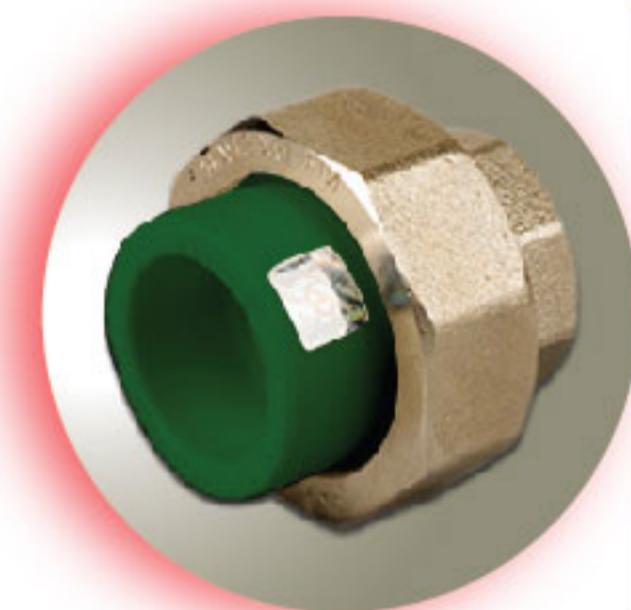
Male Wall Connection Elbow	
Code	Size (mm)
12009120	20x1/2
12009121	20x3/4



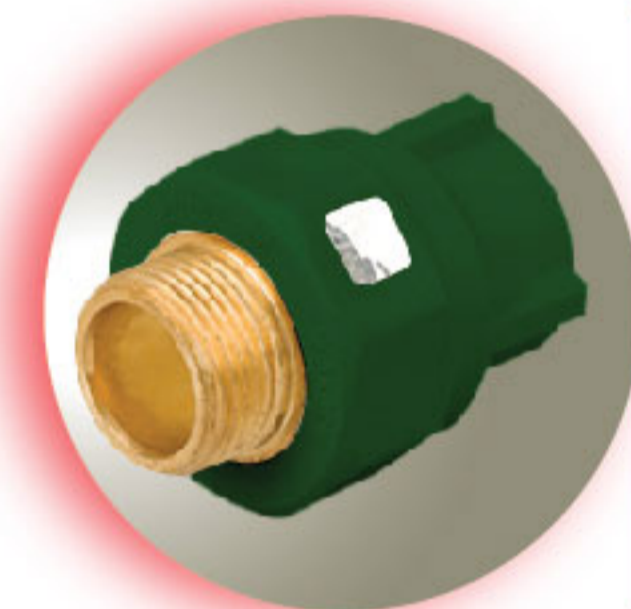
Female Adaptor	
Code	Size
12011111	20x1/2
12011112	25x1/2
12011113	25x3/4
12011114	32x1



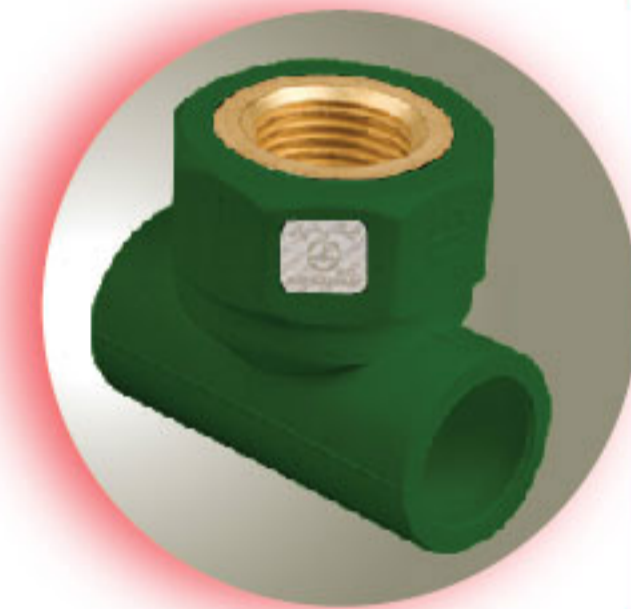
Female Hex Adaptor	
Code	Size
12012114	40x1 1/4
12012115	50x1 1/2
12012116	63x2
12012117	75x2



Female Union	
Code	Size
1251012	20x1/2
1251534	25x3/4
1251710	32x1
1251014	40x1 1/4



Male Adaptor	
Code	Size
12013111	20x1/2
12013112	20x3/4
12013113	25x1/2
12013114	25x3/4
12013115	32x1
12013116	40x1 1/4



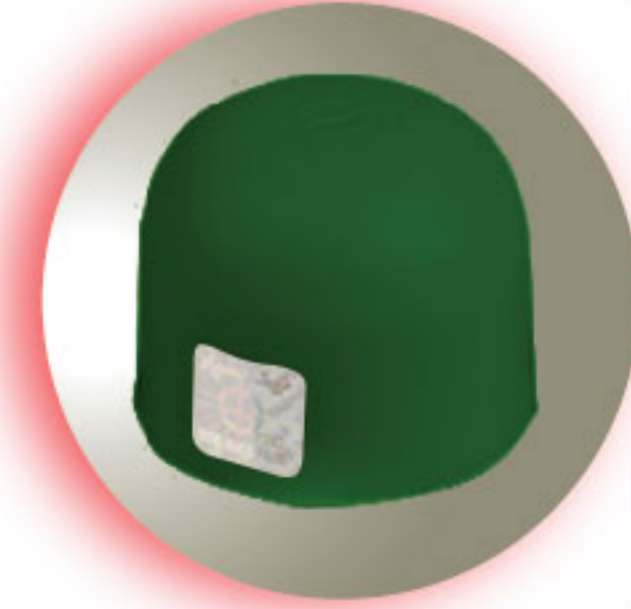
Female T Part	
Code	Size
12014111	20x1/2x20
12014112	25x1/2x25
12014113	25x3/4x25



Valve	
Code	Size
12015020	20
12015025	25
12015032	32



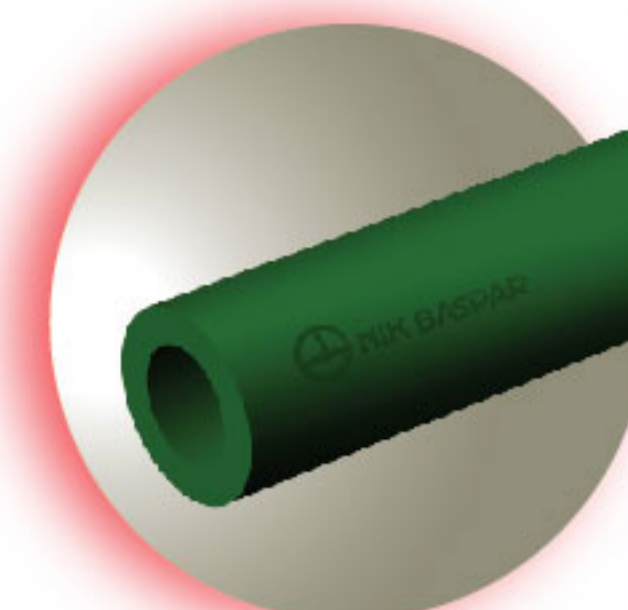
Threaded Cap	
Code	Size
12020020	20
12020025	25
12020032	32
12020040	40
12020050	50



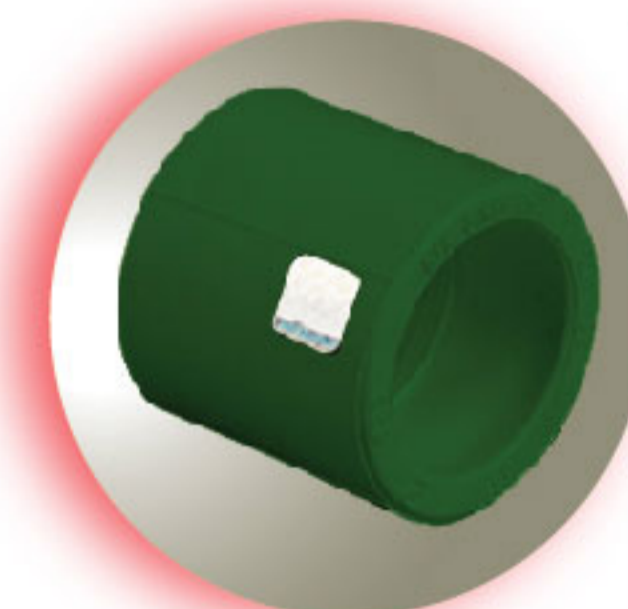
Cap	
Code	Size
12021020	20
12021025	25
12021032	32
12021040	40
12021050	50
12021063	63



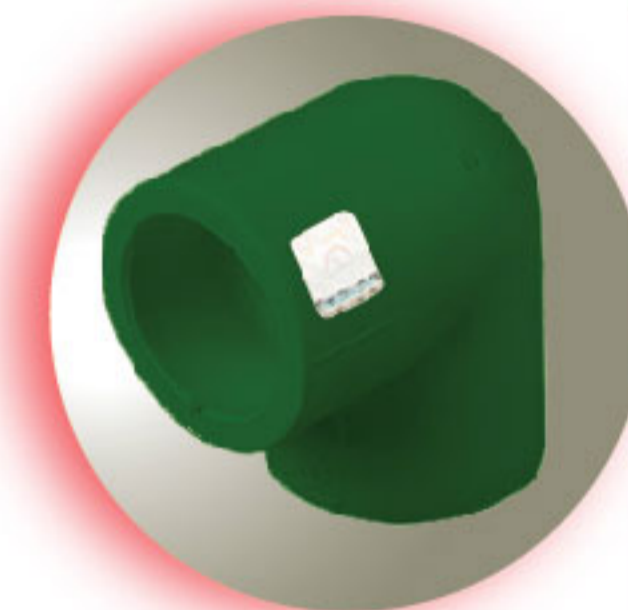
Test Plug	
Code	Size
12018020	20
12018025	25



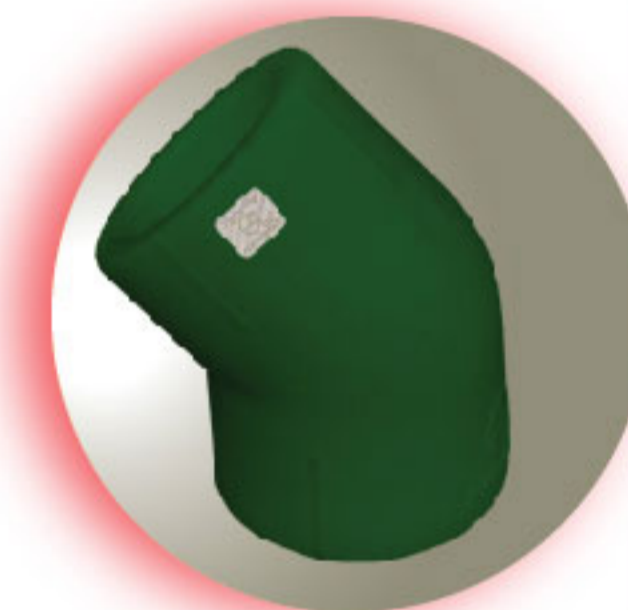
Pipe PN 20			
Code	Size (mm)	Code	Size (mm)
11000020	20	11000050	50
11000025	25	11000063	63
11000032	32	11000075	75
11000040	40		



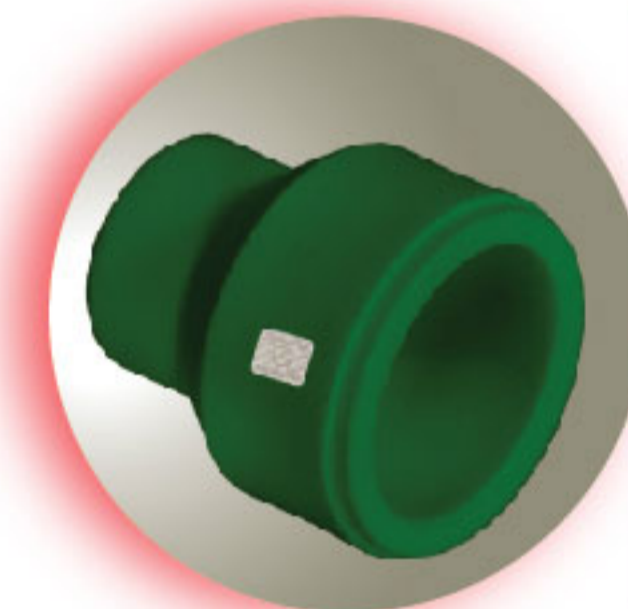
Socket			
Code	Size	Code	Size
12001020	20	12001050	50
12001025	25	12001063	63
12001032	32	12001075	75
12001040	40		



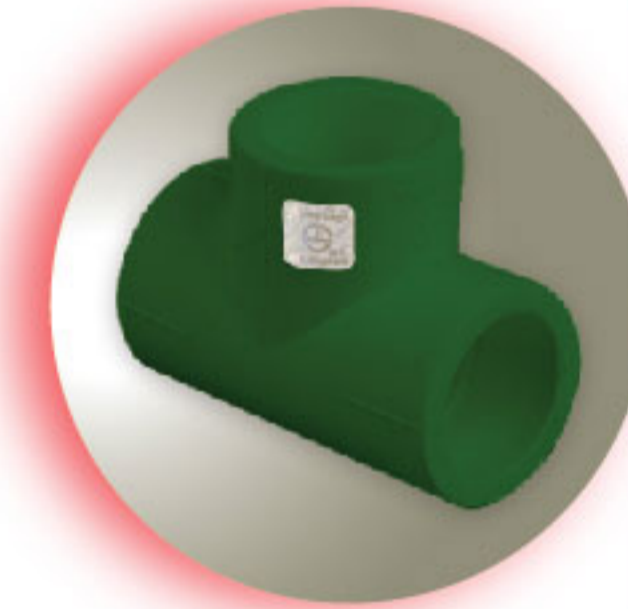
Elbow 90°			
Code	Size	Code	Size
12002020	20	12002040	40
12002025	25	12002050	50
12002032	32	12002063	63
12002035	25x20	12002075	75



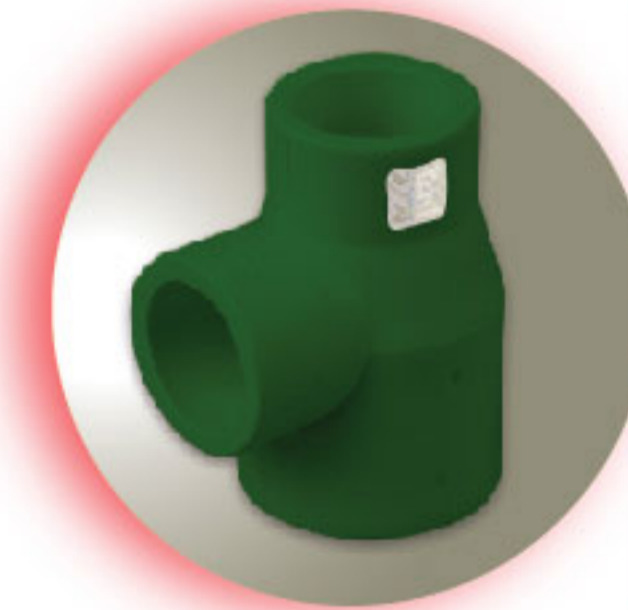
Elbow 45°			
Code	Size	Code	Size
12003020	20	12003040	40
12003025	25	12003050	50
12003032	32	12003063	63



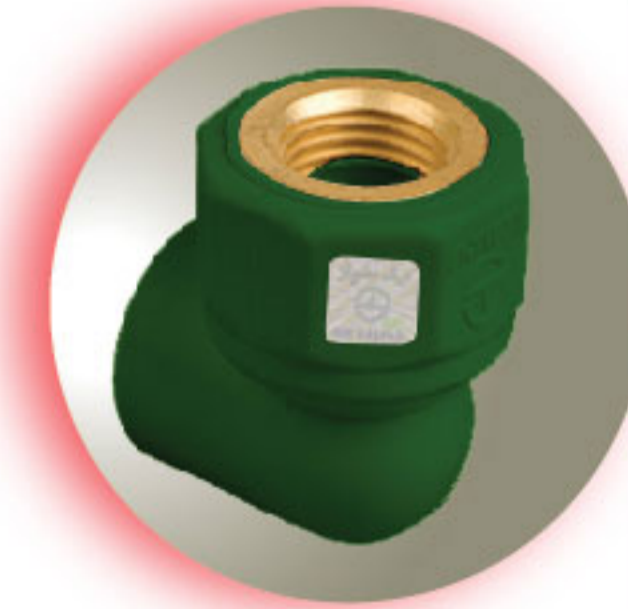
Reducer			
Code	Size	Code	Size
12004111	25x20	12004119	50x32
12004112	32x20	12004120	50x40
12004113	32x25	12004121	63x32
12004114	40x20	12004122	63x40
12004115	40x25	12004123	63x50
12004116	40x32	12004124	75x50
12004117	50x20	12004125	75x63
12004118	50x25		



Equal Tee			
Code	Size	Code	Size
12005020	20	12005050	50
12005025	25	12005063	63
12005032	32	12005075	75
12005040	40		



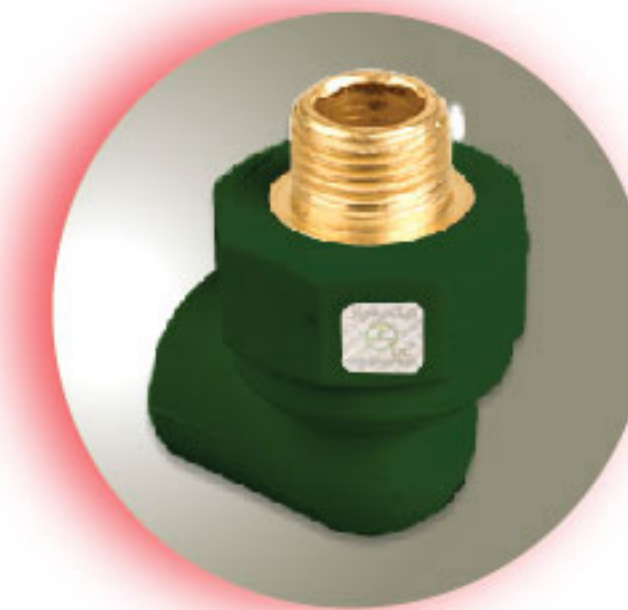
Unequal Tee			
Code	Size	Code	Size
12006111	20x20x25	12006118	40x20x40
12006112	25x20x25	12006119	40x25x40
12006113	25x20x32	12006120	40x32x40
12006115	25x25x32	12006121	50x32x50
12006116	32x20x32	12006122	50x40x50
12006117	32x25x32	12006123	63x50x63



Female Elbow			
Code	Size	Code	Size
12007111	20x1/2	12007114	25x3/4
12007112	20x3/4	12007115	32x1
12007113	25x1/2		



Female Wall Connection Elbow	
Code	Size
12008020	20x1/2
12008021	20x3/4



Male Elbow	
Code	Size
12009111	20x1/2
12009112	20x3/4
12009113	25x3/4
12009114	32x1

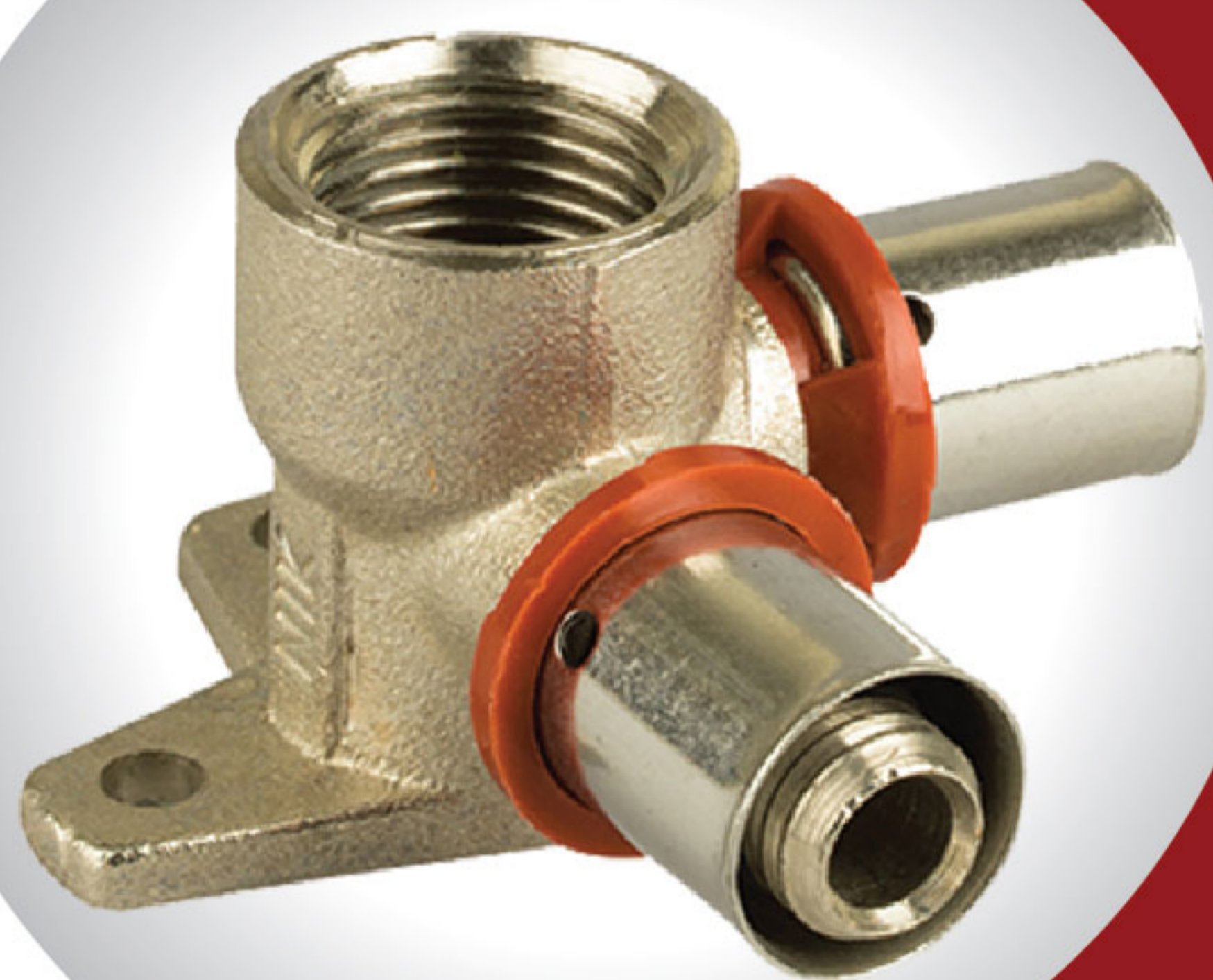
NIK BASPAR GROUP

MultiLayer

- 5 - Layers Pipe PEX & PERT II
- Collector Contact
- Press Fittings



Multilayer Pipe & Press Fittings



Use For:

- 1- Radiator Heating
- 2- Underfloor Heating
- 3- Heating and Cooling With Air Conditioning
- 4- Hot , Cold and drinking water (PERT)



Up to 90°c Pex
Up to 80°c PERT II



Reducing Tee	
Code	Size (mm)
52303101	16
52303102	20
52303103	25
52303104	32



Wall Tee	
Code	Size
52303201	16x1/2x16
52303202	20x1/2x20



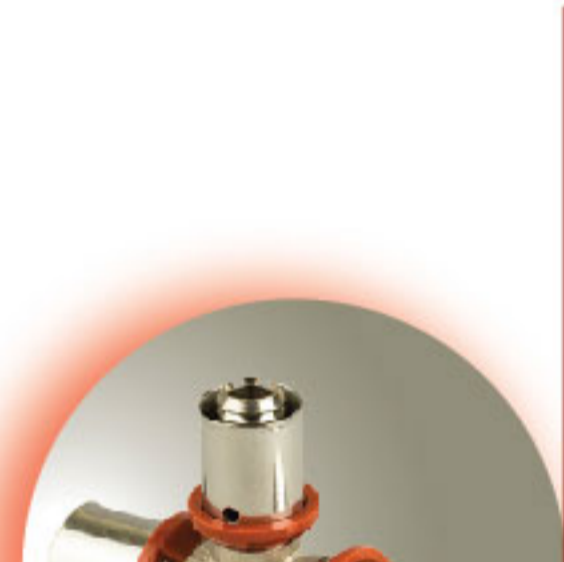
Female Tee Fittings	
Code	Size
52303301	16x1/2x16
52303302	20x1/2x20



Female Wall Plated Tee 90°	
Code	Size
52303401	16x1/2x16
52303402	20x1/2x20



Female Wall Tee 90°	
Code	Size
52303501	16x1/2x16
52303502	20x1/2x20
52303503	20x1/2x16



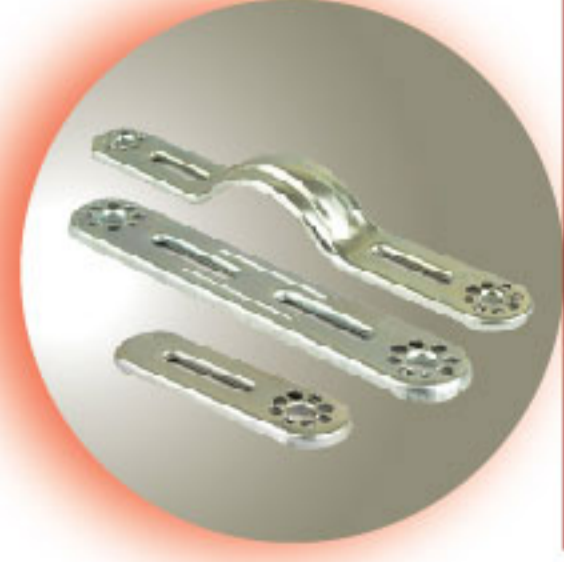
Reducing Tee	
Code	Size
52304101	16x20x16
52304102	20x16x16
52304103	20x16x20
52304104	20x20x16
52304105	25x16x16
52304106	25x16x20
52304107	25x16x25
52304108	25x20x20
52304109	25x20x25
52304110	32x16x32



Combine Manifold	
Code	Size
52307103	(1x1/2) 2b
52307104	(1x1/2) 3b
52307105	(1x1/2) 4b
52307106	(1x1/2) 5b
52307107	(1x1/2) 6b
52307108	(1x1/2) 8b
52307109	(1x1/2) 9b



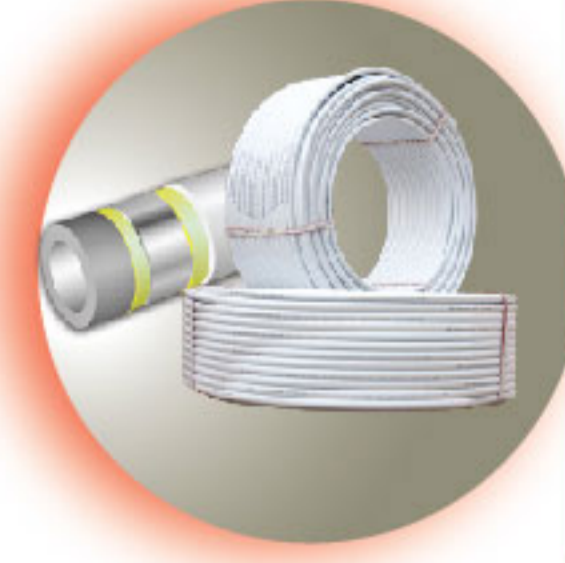
Manifolds Coupling Valve	
Code	Size
52307301	16x1/2 blue
52307302	16x1/2 red
52307303	20x1/2 blue
52307304	20x1/2 red



Bracket	
Code	Size
52309101	50cm
52309102	28cm
52309103	15cm
52309104	5cm
★52309105	28cm



Female Straight Fittings	
Code	Size
52305101	16x1/2
52305103	20x1/2
52305105	25x3/4
52305107	32x1



PERT - AL - PERT	
Code	Size (mm)
52410160	16
52410200	20
52410250	25
52410320	32



Straight Fittings	
Code	Size
52301101	16
52301102	20
52301103	25
52301104	32



Press Elbow 90°	
Code	Size
52302101	16
52302102	20
52302103	25
52302104	32



Female Wall Elbow	
Code	Size
52302201	16x1/2
52302202	20x1/2



Male Wall Plated Elbow	
Code	Size
52302301	16x 3/4
52302302	20x 3/4



Female Wall Plated Elbow	
Code	Size
52302401	16x1/2
52302402	20x1/2



Female Elbow	
Code	Size
52302501	16x1/2
52302502	20x1/2
52302503	20x3/4
52302504	25x3/4
52302505	25x1
52302506	32x1



Male Elbow	
Code	Size
52302601	16x 1/2
52302602	20x 1/2
52302603	20x 3/4
52302604	25x 3/4
52302605	25x1
52302606	32x1



Male Straight Fittings	
Code	Size
52301201	16x1/2
52301202	20x1/2
52301203	20x3/4
52301204	25x3/4
52301205	25x1
52301206	32x1



Female Straight Fittings	
Code	Size
52301301	16x1/2
52301302	20x1/2
52301303	20x3/4
52301304	25x3/4
52301305	25x1
52301306	32x1



Reducing Straight Fittings	
Code	Size
52301401	20x16
52301402	25x16
52301403	25x20
52301404	32x20
52301405	32x25

NIK BASPAR GROUP



- Mono Layer Pipe
- 2 - Layers Pipe
- Push Fit Fittings



Push Fit Fittings Split Municipal Sewage

Use For:

- 1- Connecting Split Residential Wastewater to Municipal Sewage System
- 2- Connecting Split Industrial Wastewater to Municipal Sewage System
- 3- Collecting Surface Water



Split Municipal Siphon

Size

110mm
125mm
160mm

Double Sockets

Size

110mm
125mm
160mm



Plug

Size

110mm
125mm
160mm



Threaded Split Joints

Size

110mm
125mm
160mm



Rubber Plug

Size

110mm
125mm
160mm



Single / Double Socket Pipe

Size

110*1000	160*1000
110*2000	160*2000
110*3000	160*3000
110*4000	160*4000
110*6000	160*6000

125*1000	
125*2000	
125*3000	
125*4000	
125*6000	

Elbow 45°

Size

110mm
125mm
160mm



Elbow 87°

Size

110mm
125mm
160mm



Equal Branch 45°

Size

110mm
125mm
160mm





NIK BASPAR

GROUP

Polymeric Construction Pipe and Fittings



KRAUSS MAFFEI



ROTHENBERGER
Pipetool technologies at work



basell
polyolefins



HDC
HYUNDAI



Tehran Head Office : No 20 ,Baharan Alley
South Shiraz Str , Mollasadra Ave , Tehran ,Iran
Te l e F a x : +9 8 2 1 - 8 8 0 3 3 2 0 0
Factory:Vali Asr industrial Zone , Km7 Tehran Road
YAZD-IRAN
Tel:(+98 35) 3527 90 91-5 FAX:(+98 35) 3527 55 36